

### CAL PUMP LIMITED WARRANTY

Every Cal Product is tested before shipment and when properly used and maintained will provide years of satisfaction. In the unlikely event that our material or workmanship should prove defective within the warranty period, return the product along with proof of purchase to the original dealer for inspection and replacement if needed. If you prefer, the product may be returned directly to Cal Pump for replacement. Be sure to include your name, address, proof of purchase, and reason for return. All products must be returned freight prepaid. Warranty does not cover any costs associated with the installation or removal of products subject to warranty claims. This limited warranty is extended only to the original purchaser and is void if any of the following apply:

- 1) The pump or product has been disassembled.
- 2) Alterations have been made to the cord or plug.
- 3) The pump has been run dry.
- 4) Flammable liquids, solvents, chemicals, or abrasive solutions were pumped.
- 5) Obvious abuse or misuse of the product took place.
- 6) The warranty label has been tampered with or removed from the product.

### WARRANTY PERIOD

SplashDance Controller: One year

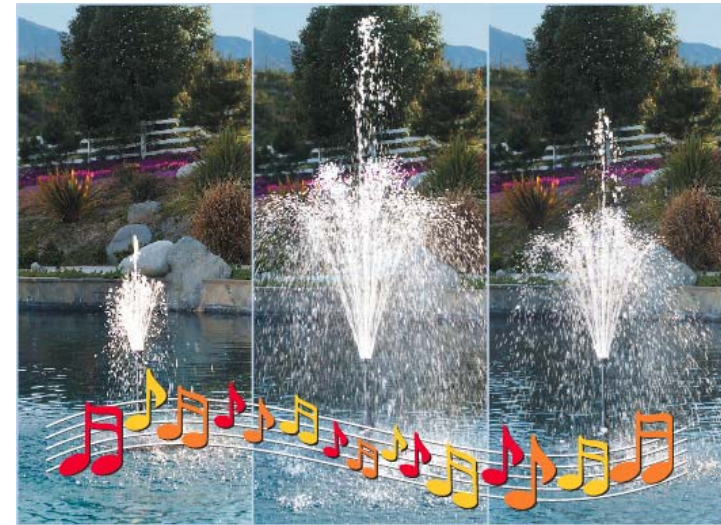
SplashDance pumps: Three years

If you have any questions regarding SplashDance or any Cal Pump product please call customer service at 800-225-1339. All products returned to Cal Pump for warranty inspection become the sole property of Cal Pump. For warranty inspection or replacements return the product freight prepaid to the address below;

RETURN PRODUCT TO:  
Calvert Engineering Inc. dba Cal Pump  
28606 Livingston Ave Valencia, Ca 91355  
Attn.: Service Department



28606 W. Livingston Ave • Valencia • California 91355  
**OWNER'S MANUAL**



- Constructed of high impact, weather resistant plastic
- Patented controller responds to music with infinite changing fountain displays
- Each Kit comes complete with controller, pump(s), fountain heads, basket(s), and float (s).
- Compatible with the SplashDance EggLite Kit
- Designed for easy 'no tools required' installation
- Durable, simple magnetic drive pumps

Simple solutions. Beautiful results.

## CONGRATULATIONS

- ◆ Thank you for purchasing the SplashDance kit designed specifically for pools and ponds.
- ◆ The Single SplashDance kit comes complete with a pump, controller, float, basket and three fountain heads with riser tubes.
- ◆ The Triple SplashDance Kit comes complete with 3 pumps, controller, three floats, three baskets, and three sets of three fountain heads with riser tubes.
- ◆ Please contact our customer service department, should you need assistance with this product. Phone (800) 225-1339 Monday through Friday, 7:00 AM to 5:00 PM. Pacific Time.
- ◆ SplashDance is designed to work only with Cal Pump magnetic drive pumps that have been designed specifically for SplashDance.
- ◆ The SplashDance controller is protected by patent number 6717383.

### **!WARNING!**

**RISK OF ELECTRICAL SHOCK – INTERFACING ELECTRICAL EQUIPMENT MUST HAVE A GROUNDING TYPE ATTACHMENT PLUG. TO REDUCE THE RISK OF ELECTRICAL SHOCK, CONNECT ONLY TO A PROPERLY GROUND, GROUNDING-TYPE RECEPTACLE WITH A CLASS “A” GROUND FAULT CIRCUIT INTERRUPTER (GFCI).**

### **!WARNING!**

**SPLASHDANCE IS NOT A TOY!**  
**DO NOT SWIM IN A POOL OR POND**  
**WHILE SPLASHDANCE IS**  
**INSTALLED OR OPERATING**  
**Do not leave children unattended**  
**around any pool or pond!**

### **!CAUTION!**

DO NOT ATTEMPT TO USE SPLASHDANCE WITHOUT FIRST READING ALL INSTRUCTIONS. USE ONLY COMPONENTS AND ACCESSORIES THAT HAVE BEEN DESIGNED BY CAL PUMP SPECIFICALLY FOR SPLASHDANCE.

### **WARNING!**

When mounting on or over a combustible surface, a floor plate of at least 1.43mm galvanized or 1.6mm uncoated steel extended at least 150mm beyond the equipment on all sides must be installed..

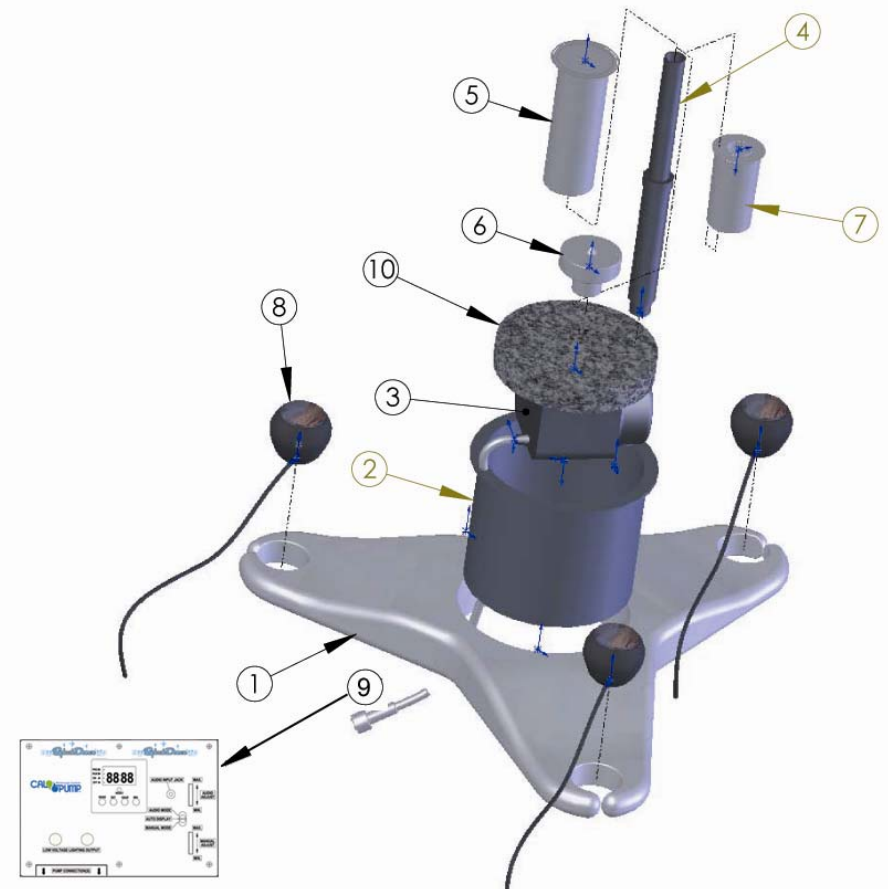


Fig. 1

## TROUBLE SHOOTING

<u>PROBLEM</u>	<u>CAUSE</u>	<u>SOLUTION</u>
If unit stops operating	No power  Timer shut off	Make sure unit is plugged into a power source. Timer should be in "on" position or programmed run time. (see fig.3) Unplug unit from power source for 30 seconds allowing unit to reset. Make sure mode switch is in desired position. (see fig.2)
Water Display is not performing as pictured	Fountain Heads are clogged	Remove Fountain Heads and take them apart. Rinse in vinegar or clear water to remove any debris or mineral deposits.
Pump runs intermittently	Pump is dirty	Remove pump from water display. Unplug pump from power source. Remove front cover from pump; gently pull out the impeller and magnet. Wipe out the inner chamber of the pump with a cotton swab or cloth dipped in mineral oil or baby oil. Replace the impeller and magnet, do not force onto the shaft.
One or more pumps cease to operate in Manual mode		Unplug unit from power source for 30 seconds allowing unit to reset. Make sure that the manual adjust wheel is in the center position before turning the unit on. The manual adjust wheel should not be set to either extreme, (maximum or minimum) before turning the unit on.

## UNPACKING YOUR SPLASHDANCE KIT

Make sure the accessories shown below are packed with your SplashDance Kit. They are provided to help you use the SplashDance system. Optional accessories are also listed.

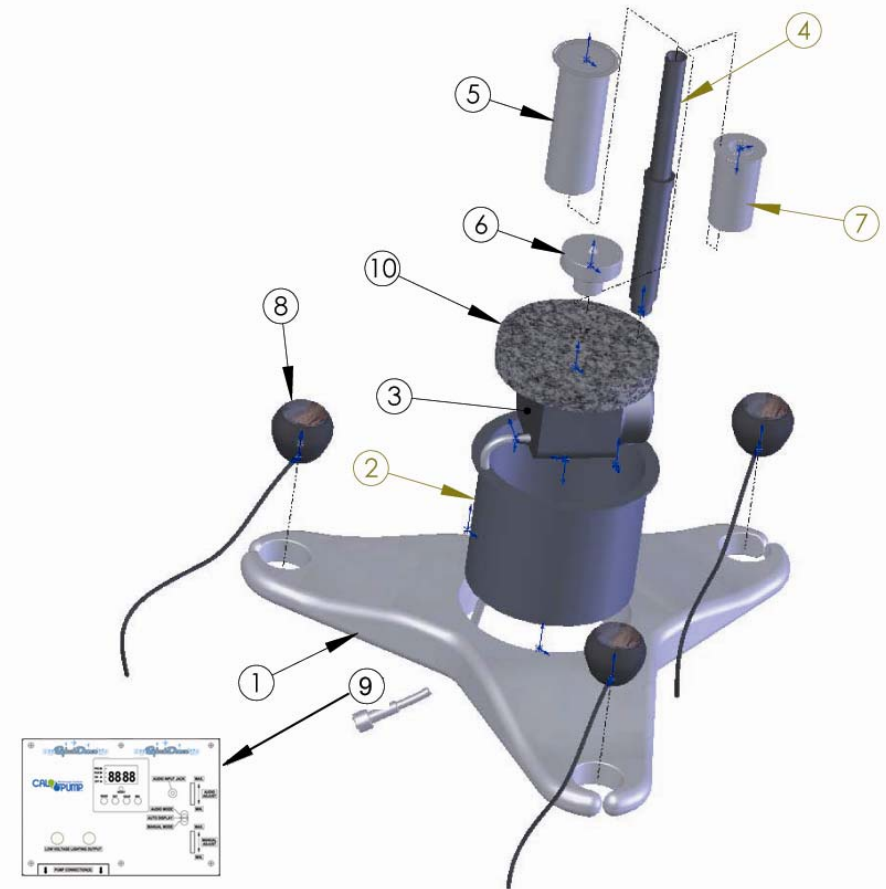


FIG. 1

- |           |                     |   |
|-----------|---------------------|---|
| 1. Float  | 4. Riser Tube       | 8. SplashDance Egglite Kit (optional) LED-3 |
| 2. Basket | 5. FT5 Aqua Dome    | 9. Controller                               |
| 3. Pump   | 6. FT2 Fleur de Lis | 10. Foam Filter                             |
|           | 7. FT9 Foam Jet     |   |

## OPTIONAL ACCESSORIES

1/8" Mono or Stereo Audio cable-available at most electronic retailers.

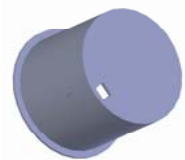
SplashDance 3 EggLite Kit –Model # LESD-3.

The SplashDance controller can be used with either the small or large SplashDance magnetic drive pumps. The SplashDance fountain heads fit both the small and large SplashDance magnetic drive pumps. SplashDance pumps and fountain heads may be purchased separately by calling Cal Pump customer service department at 800-225-1339 Monday-Friday from 7 am-5pm PT. When ordering SplashDance pumps please specify model SDP400 for the small pump and SDP800 for the larger model pump.

## GETTING STARTED

Once you have determined that your SplashDance unit is complete, you can now start assembling the SplashDance Kit.

1. Select which fountain head you would like to use. Each SplashDance kit comes with three styles of spray heads: a three-step fleur de lis, an aqua dome, and a foam jet. Attach the fountain head you have selected to the riser tube.
2. Locate the basket and a magnetic drive pump. Run the pump cable through the hole located on the bottom of the basket. Sit the pump in the bottom of the basket.



3. Attach the riser tube to the pump by threading it on to the discharge.



## DISPLAY SETTINGS

The feature select switch is displayed in figure two below. Slide the switch to the setting you desire, audio mode, auto display, or manual mode. The pump connections are located under the front panel of the controller. Complete installation instructions for the pumps and the optional EggLites can be found on page 6 of this manual. The SplashDance single controller low voltage output will accommodate up to 60 watts. The SplashDance triple controller low voltage output will accommodate up to 100 watts.

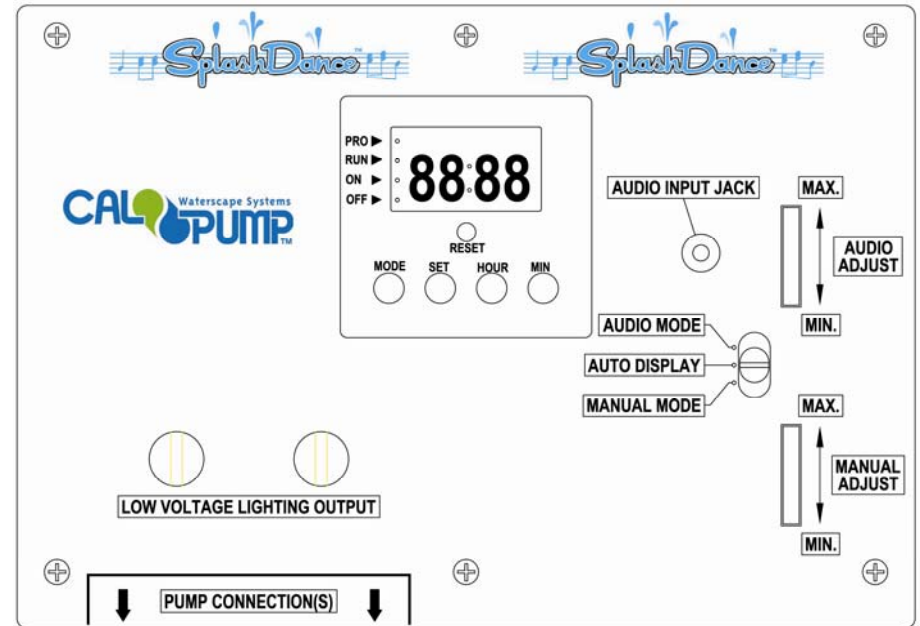


Fig. 2 - Enlarged

## USING SPLASHDANCE

The SplashDance kit comes complete with three different fountain heads: a fleur de lis, an aqua dome, and a foam jet. Any combination of these three fountain heads can be used on the SplashDance pumps. The SplashDance controller can be set to your favorite music with the audio mode, or it can be set to two other positions.

## MANUAL MODE

Slide the feature select switch to the bottom position for manual mode. The manual mode allows you to set the fountain display to a specific height. You can adjust the height of the display in this program setting by turning the manual adjust wheel from minimum to maximum after the unit has been turned on, the manual adjust wheel should not be at either extreme (minimum/ maximum) when starting the unit.

## AUTO DISPLAY

The feature select switch can also be set to the auto display mode (center position). In this mode the display responds to a preset internal program and is not manually adjustable.

## AUDIO INPUT JACK

The audio input will accept levels from either the loudspeaker output, the headphone output, or the line output of most consumer audio players and stereo systems. Please note that on some systems, plugging into the headphone jack disables the loudspeakers and you will not hear the music, however SplashDance will still react to audio from this output. The audio input is through the front panel mini-audio input jack. (see Fig. 2) This input is completely isolated from the internal circuitry for safety reasons. A 1/8" stereo or mono audio cable or adapter is necessary for connecting SplashDance to your particular audio system. These cables or adapters are available at any audio or electronic supply store.

## AUDIO MODE

Plug the appropriate audio cable into the SplashDance controller audio input jack and connect the other end of the cable to your audio player/system. Set the music level on your stereo system to the volume you want to hear through your speaker system. Slide the feature select switch to the audio mode position (uppermost position). Now adjust the audio adjust wheel on the SplashDance controller so that the fountain “dances” through the full range of motion at the level that you desire. (see Fig.2)

**Note:** The activity of the fountain will be dependent on the type of music you choose. Music with large dynamics, i.e. music with a lot of variation in loudness and particularly music with dynamic bass and drums will tend to give the best displays.

4. The optional SplashDance Egglite kit can now be installed in the float. Slide the Egglite cable through the openings on the float and then slip each Egg into the molded openings on the float and adjust as desired. The SplashDance single controller low voltage output will accommodate up to 60 watts. The SplashDance triple controller low voltage output will accommodate up to 100 watts. The SplashDance Egglite kit comes complete with three 10 watt Egglites.



5. Insert the basket with the pump into the float as shown in the illustration below. Place the foam filter piece on top of the pump and around the riser tube.

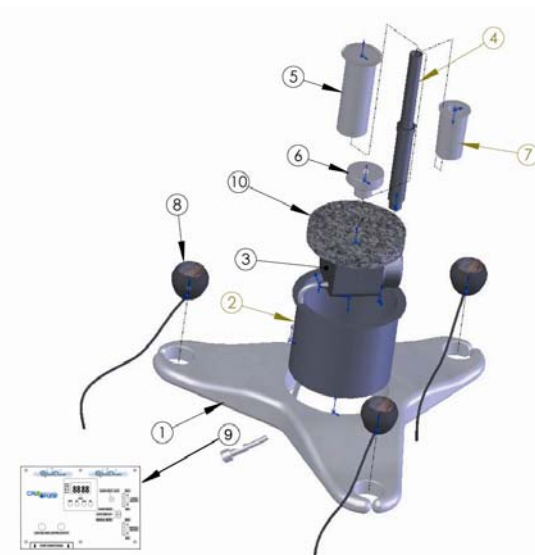


Fig. 1



## ANCHORING THE FLOAT

We recommend using a monofilament line (not included), tied to the bottom of the basket to secure the float to a weighted object on the bottom of the pool or pond. If staking the float to the sides of the pool or pond, tie the line to the top edge of the basket. If you have the triple SplashDance kit you can tie the floats together by running a line from the top of the first basket to the center basket. Then run a line from the top of the center basket to the third basket. You can now secure the two outermost floats to stakes (not included) at the side of the pond or pool.

## INSTALLING THE CONTROLLER

Locate the SplashDance Controller in a dry and protected area. The controller is equipped with 10' of power cord. There are mounting bosses on the back of the unit for convenience. It is recommended that the unit be mounted at least 3' above ground level. You may plug the unit directly into a properly grounded, grounding type receptacle equipped with a Ground Fault Circuit Interrupter. You are now ready to attach the pump(s) and the Egglites (optional) to the SplashDance Controller.

Plug the pump into the socket located on the bottom of the controller by aligning the three pins and the flat landing and pushing into the socket. Thread the retaining nut over the plug and tighten by turning the nut clockwise. Plug the EggLites into the 6-way adapter power strip. Attach the 6-way adapter power strip to the controller by slipping the stripped ends into the holes on the low-voltage terminal posts. The maximum low voltage output on the single controller is 60 watts and 100 watts on the triple controller. (see Fig.2)

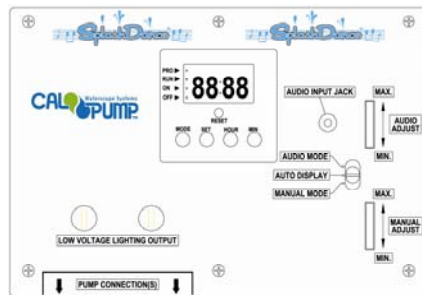


Fig. 2

## SETTING THE TIME:

Plug the power supply cord into a GFCI protected wall outlet that is 120 volt AC 60 Hz. To program press the “mode” button until all indicator lights are off. Press “SET” once and then the “HOUR” and “MIN” buttons to adjust the current time. Press “mode” to the desired operation function. (see Fig.3)

## TIMER CONTROLS

The minimum setting time is one minute and the maximum setting time is 24 hours for the SplashDance Controller. There are a total of six (6) ON-OFF setting positions per 24-hour period. You may use one or all six programs.

**SETTINGS:**      **MODE** – Switch to programming  
                         **RUN**- Automatic Operation  
                         **ON**  
                         **OFF**

1. Press “MODE” button once until all program numbers are displayed.
2. Press “SET” button once and the screen will display “1 ON”.
3. Press “HOUR” and “MIN” button until desired start time is reached.
4. Press “SET” to set the “OFF” time; the “ON” will disappear from the screen.
5. Press “HOUR” and “MIN” button until desired off time is reached.
6. Repeat steps 2 (pressing “SET” button once) through 5 for a maximum of 6 programmable options per day.
7. When finished programming press the “MODE” button until “RUN” is displayed on the screen to start operation.

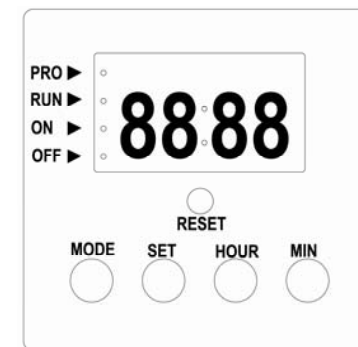


Fig. 3

To override the program press the “MODE” button until “ON” is displayed, then to turn off press “MODE” button until “OFF” is displayed. For automatic operation you must put the unit back into “RUN” mode.

**NOTE:** This unit is equipped with a reset button. In the event of a programming malfunction press the “reset” button. This will clear all programs including the current time. Then repeat steps 1 through 7.

**CAUTION:**

1. **Not for use with dimmers.**
2. Disconnect all power supplies before servicing.
3. Risk of fire. If installation involves running wiring through a building structure, special wiring methods are needed. Consult a qualified electrician.
4. Suitable for indoor or outdoor use.